



CLESSE
MOUNTING KITS

EVOLUTION METERBOX
MOUNTING KIT OPTIONS

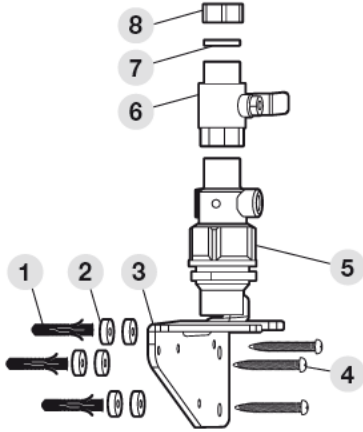
SUPPLIED BY
CLESSE
(UK) LIMITED

Clesse Evolution Boxes are designed as a 2 fit process, the bracket kits should be installed first and then the box second. **This means any colour or inlet/outlet variant can be installed with any bracket kit.** For example, you could have a white semi buried box.

Wall & Semi Submerged Mounting Bracket

Clesse Part Code: **UUMBWALMOKIT**

This kit is used where the box is required to be mounted to a wall, or is semi buried as pictured below.



No.	Description	Qty Per Kit
1	Rawl Plugs	5
2	Nylon Spacers	6
3	EvoBox Mounting Bracket	1
4	M6 x 50mm Screws	5
5	GF 25mm PE Adapter	1
6	Emergency Control Valve 3/4"	1
7	Sealing Cap Washer	1
8	3/4" Blanking Cap	1



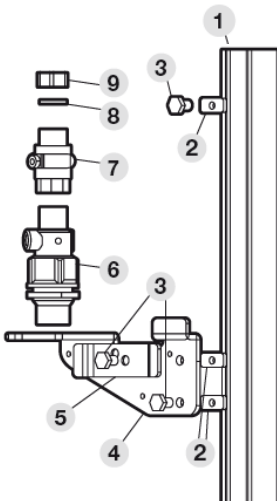
The height of where the bracket is fitted determines whether it's semi sub or a wall mounted box. The bracket kit remains exactly the same, the engineer installing adjusts the height depending on where they want the box to sit against the ground level. Some examples below:



Post Mounting Kit

Clesse Part Code: **UUMBPOSTMOKIT**

Typically used with Green Caravan Meterboxes on holiday parks, this is used to mount the Meterbox on a post offset from the caravan.



No.	Description	Qty Per Kit
1	1.5m Knock In Unistrut Post	1
2	M10 Unistrut Spring Nuts	3
3	M10 x 25mm Bolts	3
4	Post Support Bracket	1
5	EvoBox Mounting Bracket	1
6	GF 25mm PE Adapter	1
7	Emergency Control Valve 3/4"	1
8	Sealing Cap Washer	1
9	3/4" Blanking Cap	1





CLESSE
MOUNTING KITS

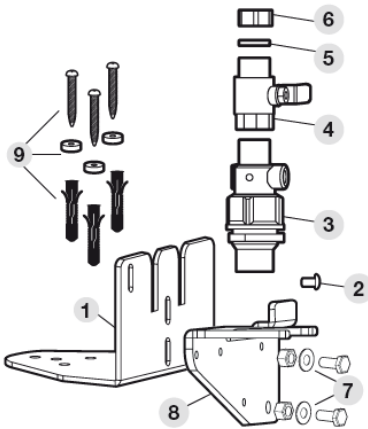
EVOLUTION METERBOX
MOUNTING KIT OPTIONS

SUPPLIED BY
CLESSE
(UK) LIMITED

Edge of Base Kit 2 (Flush) (Bolt Down)

Clesse Part Code: UUMBBASEMOKIT-2

Mounted to the caravan's concrete base, this bracket is designed so Meterbox sits semi buried and the box will sit flush to the caravan.



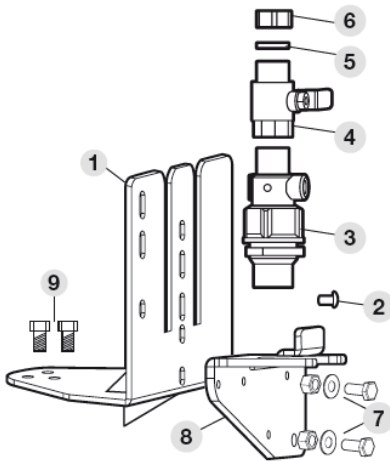
No.	Description	Qty Per Kit
1	Edge of Base (Flush) Bracket	1
2	M8 Security Bolt / Washer / Nut	1
3	GF 25mm PE Adapter	1
4	Emergency Control Valve 3/4"	1
5	Sealing Cap Washer	1
6	3/4" Blanking Cap	1
7	M10 x 25mm Nuts & Bolts	1
8	Sealing Cap Washer	2
9	EvoBox Mounting Bracket	1
10	Rawl Bolts & Washers	3



Edge of Base Kit 3 (Extended 150mm)

Clesse Part Code: UUMBBASEMOKIT-3

Designed in the same way as the above bracket, provides 150mm clearance away from the base in the event the caravan has a skirting around it. This bracket allows for adjustment of the Meterbox mounting height.



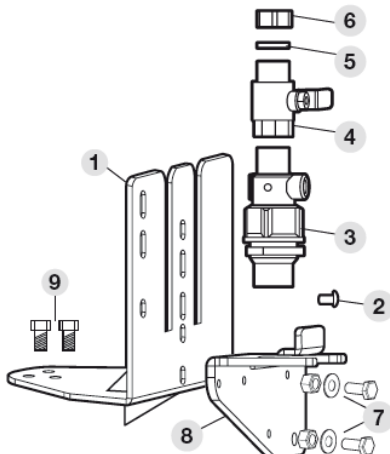
No.	Description	Qty Per Kit
1	Edge of Base (Ext 150mm) Bracket	1
2	M8 Security Bolt / Washer / Nut	1
3	GF 25mm PE Adapter	1
4	Emergency Control Valve 3/4"	1
5	Sealing Cap Washer	1
6	3/4" Blanking Cap	1
7	M10 x 25mm Nuts & Bolts	1
8	Sealing Cap Washer	2
9	EvoBox Mounting Bracket	1
10	Rawl Bolts & Washers Not Supplied	-



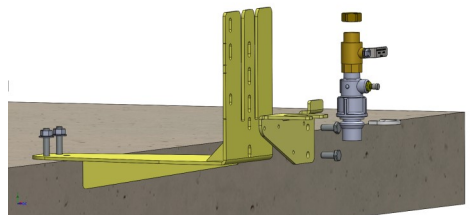
Edge of Base Kit 3 (Extended 300mm)

Clesse Part Code: UUMBBASEMOKIT-4

Designed in the same way as the above bracket but to provide 300mm clearance away from the base in the event the caravan has a skirting around it. This bracket allows for adjustment of the Meterbox mounting height.



No.	Description	Qty Per Kit
1	Edge of Base (Ext 300mm) Bracket	1
2	M8 Security Bolt / Washer / Nut	1
3	GF 25mm PE Adapter	1
4	Emergency Control Valve 3/4"	1
5	Sealing Cap Washer	1
6	3/4" Blanking Cap	1
7	M10 x 25mm Nuts & Bolts	1
8	Sealing Cap Washer	2
9	EvoBox Mounting Bracket	1
10	Raw Bolts & Washers Not Supplied	-

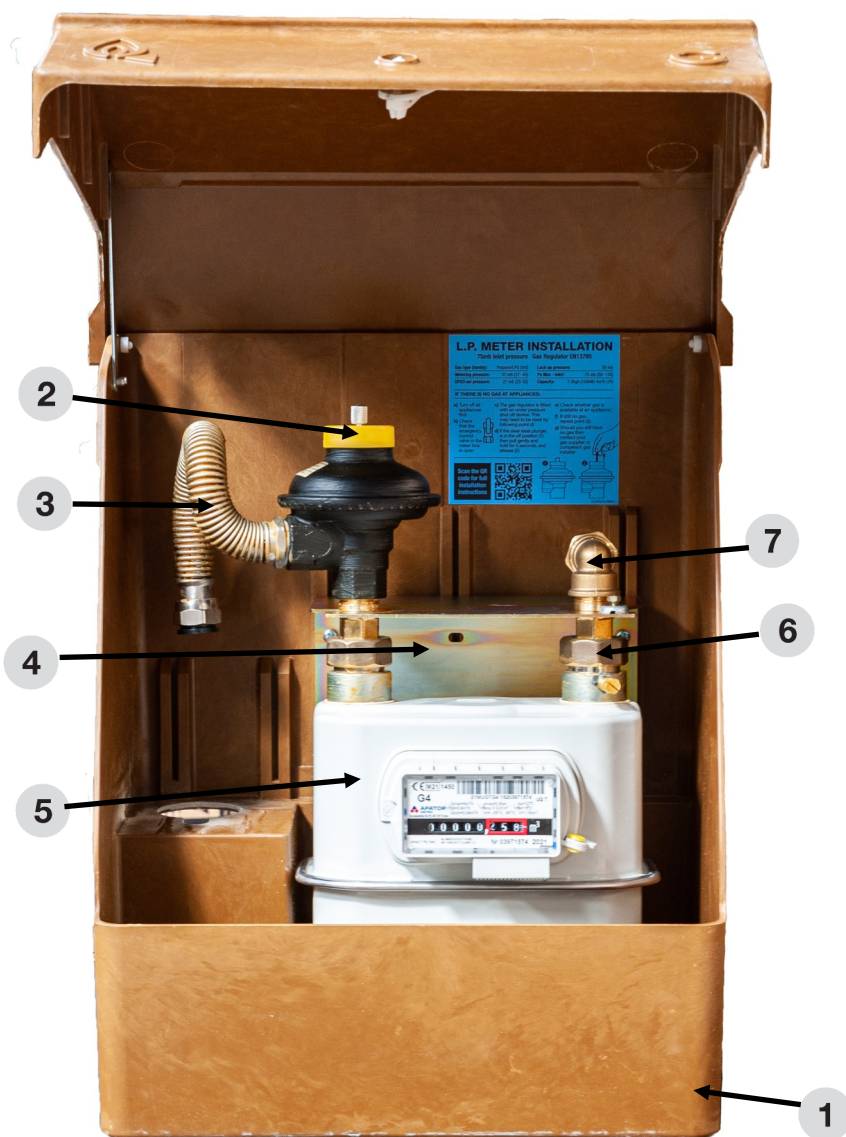




CLESSE PART No:
See table below

**EVOLUTION METERBOX
LOW PRESSURE**

**SUPPLIED BY
CLESSE
(UK) LIMITED**



22mm compression outlet option illustrated

No.	CLUK Part Code	Description	Qty Per Box
1	UUMBXXX	Clesse Evolution® Meterbox	1
2	052321AA	STB27R 37mbar UPSO Regulator Angled	1
3	UU3/MFSS290MM	3/4" BSPP FEMALE x 3/4" BSPTM HOSE 290MM	1
4	MBUMBRKT	152mm Meter Mounting Shelf/Bracket	1
5	UU6METERTC	Temperature Compensated U6 G4 152mm Gas Meter	1
6	UUMETBC320	Meter Adaptor 1" x 3/4" BSP	2
7	UU75481	3/4" F x 2mm Compression Elbow	1

Clesse Part Code	Description
UUMBGRW-LP-BH	Green with window, low pressure, bulkhead outlet.
UUMBGRW-LP-22MM	Green with window, low pressure, 22mm compression outlet.
UUMBGRW-LP-ROH	Green with window, low pressure, rear outlet hose.
UUMBBRO-LP-BH	Brown no window, low pressure, bulkhead outlet.
UUMBBRO-LP-22MM	Brown no window, low pressure, 22mm outlet.
UUMBBRO-LP-ROH	Brown no window, low pressure, rear outlet hose.
UUMBWHO-LP-BH	White no window, low pressure, bulkhead outlet.
UUMBWHO-LP-22MM	White no window, low pressure, 22mm outlet.
UUMBWHO-LP-ROH	White no window, low pressure, rear outlet hose.

Temperature Compensated meters also available, use part code ending in BHTC or 22TC

Technical Information

Regulator:	STB27R- UPSO 3rd Stage Regulator
Regulator standard:	EN13875
Inlet Pressure:	75 mbar
Outlet Pressure:	37 mbar
OPSO:	-
UPSO:	27-30 mbar
LPRV	-
Max Capacity	4m ³ /h (100kW) LPG
Inlet connection:	25mm PE
Outlet connection:	Various
Meter size:	G4 152mm
Meter type:	Clesse G4 Meter

See page 7 for STB27R regulator instructions.

Box Technical Information

Design:	Clesse Evolution® Box
Conformity	BS8499:2009
Height:	498mm
Width:	436mm
Depth	282mm
Brickwork Opening:	n/a

Outlet Connections Available:

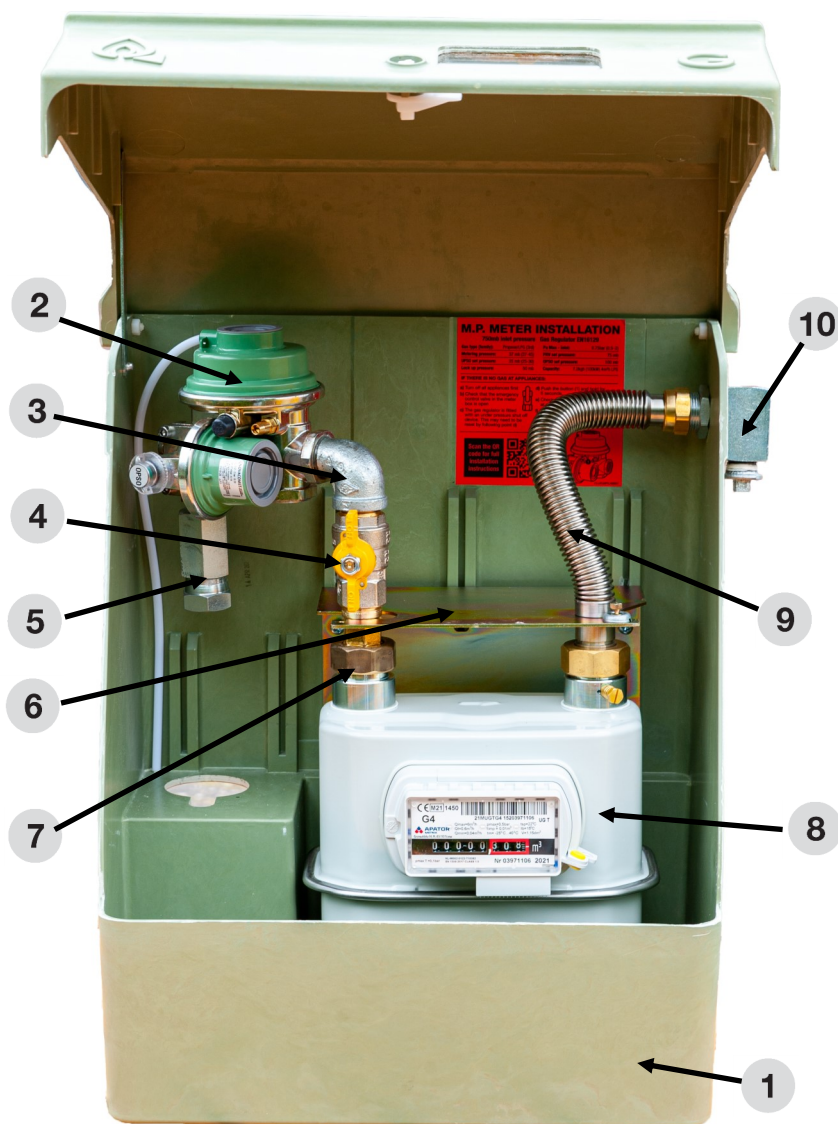
1/2" Female Bulkhead	
22mm Compression Elbow Fitting	
Rear Outlet Hose	



CLESSE PART No:
See table below

EVOLUTION METERBOX
MEDIUM PRESSURE

SUPPLIED BY
CLESSE
(UK) LIMITED



Bulkhead outlet option illustrated

Technical Information	
Regulator:	BP2284 (BP2203 family)
Regulator standard:	EN16129
Inlet Pressure:	0.3—2 bar
Outlet Pressure	37 mbar
OPSO:	100 mbar
UPSO:	27-30 mbar
LPRV	75 mbar
Max Capacity	4m ³ /h (100kW) LPG
Inlet connection:	25mm PE
Outlet connection:	Various
Meter size:	G4 152mm
Meter type:	Clesse G4 Meter

See page 8 & 9 for BP2284 regulator instructions.

Box Technical Information	
Design:	Clesse Evolution® Box
Conformity	BS8499:2009
Height:	498mm
Width:	436mm
Depth	282mm
Brickwork Opening:	n/a

No.	CLUK Part Code	Description	Qty Per Box
1	UUMBXXX	Clesse Evolution® Meterbox	1
2	006829FE	BP2284 37mbar UPSO OPSO 2nd Stage Reg	1
3	UUELBMFG3/4	3/4" MxF Galvanised Elbow	1
4	UU6276020	3/4" BSPT MxF Butterfly Ball Valve	1
5	UUMF2PT0812EXT	1/2" BSPTM x 3/4" BSPP Swivel	1
6	MBUMBRKT	152mm Meter Mounting Shelf/Bracket	1
7	UUMETBC320	Meter Adaptor 1" x 3/4" BSP	1
8	UU6METERTC	Temperature Compensated U6 G4 152mm Gas Meter	1
9	UUSS3/4BS746270	Clessinox Stainless Rigid Tube BS746 1" x 3/4" F BSP	1
10	UUMF90PT1208	3/4" BSP x 1/2" Bulk Head Elbow Outlet	1

Outlet Connections Available:	
1/2" Female Bulkhead	
22mm Compression Elbow Fitting	
Rear Outlet Hose	

Clesse Part Code	Description
UUMBGRW-MP-BH	Green with window, medium pressure, bulkhead outlet.
UUMBGRW-MP-22MM	Green with window, medium pressure, 22mm compression outlet.
UUMBGRW-MP-ROH	Green with window, medium pressure, rear outlet hose.
UUMBBRO-MP-BH	Brown no window, medium pressure, bulkhead outlet.
UUMBBRO-MP-22MM	Brown no window, medium pressure, 22mm outlet.
UUMBBRO-MP-ROH	Brown no window, medium pressure, rear outlet hose.
UUMBWHO-MP-BH	White no window, medium pressure, bulkhead outlet.
UUMBWHO-MP-22MM	White no window, medium pressure, 22mm outlet.
UUMBWHO-MP-ROH	White no window, medium pressure, rear outlet hose.

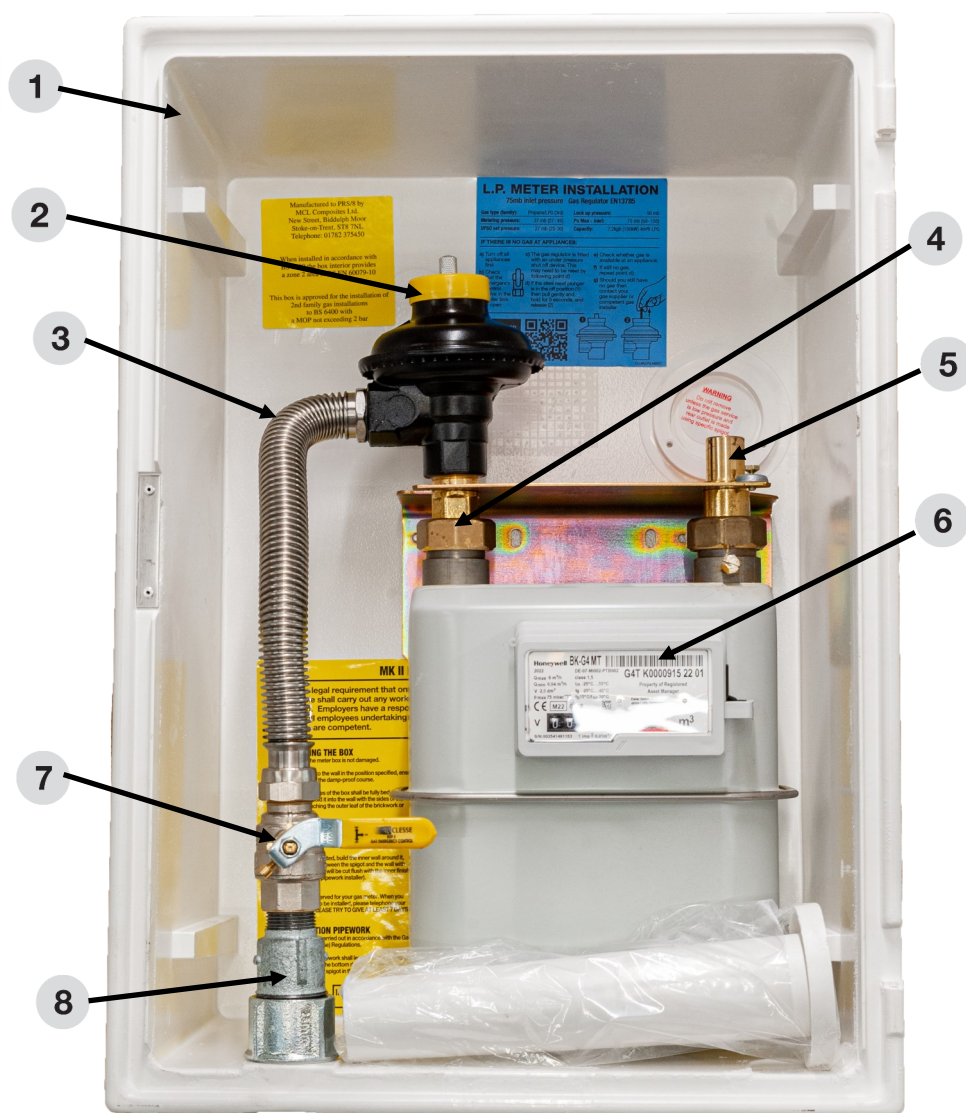
Temperature Compensated meters also available, use part code ending in BHTC or 22TC



CLESSE PART No:
UURECESSLPTC

RECESSED METERBOX
LOW PRESSURE

SUPPLIED BY
CLESSE
(UK) LIMITED



Technical Information	
Regulator:	STB27R- UPSO 3rd Stage Regulator
Regulator standard:	EN13875
Inlet Pressure:	75mbar (50-400mbar)
Outlet Pressure:	37mbar
OPSO:	-
UPSO:	27-30 mbar
LPRV	-
Max Capacity	4m ³ /h (100kW) LPG
Inlet connection:	25mm PE
Outlet connection:	22mm Copper
Meter size:	G4 152mm
Meter type:	Clesse Temperature Compensated G4

See page 7 for STB27R regulator instructions.

Box Technical Information	
Design:	Mitras Recessed G01034
Conformity	BS8499:2009
Height:	600mm
Width:	430mm
Depth	220mm
Brickwork Opening:	365x535x155mm

No.	CLUK Part Code	Description	Qty Per Box
1	UUG01024	Mitras Inset Meterbox C/W Spigot	1
2	052321AA	STB27R 37mbar UPSO Regulator Angled	1
3	3/4MFSS290MM	3/4" BSP x 3/4" BSPT M 290mm Meterbox Hose	1
4	UUMETBC320	3/4" BSPT x 1" BS746 Meter Union	1
5	UUMETBC222	1" BS746 x 22mm Copper Meter Union	1
6	UUU6METERTC	Temperature Compensated U6 G4 152mm Gas Meter	1
7	UU6276024-RIV	Emergency Control Valve 3/4"	1
8	PRIMO6	3/4" x 25mm Primofit Adapter	1

Clesse Part Code	Calor Item No.	Description
UURECESSLPTC	26600	Recess box white, low pressure, 22mm compression outlet

**CLESSE
SPARES LISTING****EVOLUTION METER BOX SPARES LIST****SUPPLIED BY
CLESSE
(UK) LIMITED**

Spares Category	CLUK Part Code	Description	Where Is It Used?
Empty Meterbox	UUMBWHW	Clesse Meterbox Empty - White - Inc. Window	-
Empty Meterbox	UUMBWHO	Clesse Meterbox Empty - White - No Window	-
Empty Meterbox	UUMBGRW	Clesse Meterbox Empty - Green - Inc. Window	-
Empty Meterbox	UUMBGR0	Clesse Meterbox Empty - Green - No Window	-
Empty Meterbox	UUMBBRW	Clesse Meterbox Empty - Brown - Inc. Window	-
Empty Meterbox	UUMBBR0	Clesse Meterbox Empty - Brown - No Window	-
Empty Meterbox	UUG01024	Mitras Empty Inset/Recessed Meterbox	-
Spare Lids	UUMBLWHW	Clesse Meterbox Lid - White - Inc. Window	Broken Lid Replacements
Spare Lids	UUMBLWHO	Clesse Meterbox Lid - White - No Window	Broken Lid Replacements
Spare Lids	UUMBLGRW	Clesse Meterbox Lid - Green - Inc. Window	Broken Lid Replacements
Spare Lids	UUMBLGR0	Clesse Meterbox Lid - Green - No Window	Broken Lid Replacements
Spare Lids	UUMBLBRW	Clesse Meterbox Lid - Brown - Inc. Window	Broken Lid Replacements
Spare Lids	UUMBLBR0	Clesse Meterbox Lid - Brown - No Window	Broken Lid Replacements
Spare Lids	UUIS0032	Mitras Inset/Recessed Meterbox Lid - White	Broken Lid Replacements
Box Components	UUMBL-LOCK	Clesse Meterbox Replacement Lock	-
Box Components	UUMB-HINGE	Clesse Meterbox Spare Hinge	-
Box Components	UUCARAKEY	Spare Gas Meterbox Key (Yellow)	-
Box Components	UUMB-WINDOW	Clesse Meterbox Spare Window	-
Box Components	UUMBMLEVER	Clesse Meterbox Spare Lever	-
Regulators	052321AA	STB27 UPSO 37mbar 3rd Stage Reg - Angled	Low Pressure Boxes
Regulators	006829FE	BP2284 UPSO/OPSO 37mbar Reg (MP/2nd Stage)	Medium Pressure Boxes
Meter Hoses	UU3/4MFSS290MM	3/4" BSP F Swivel x 3/4" BSPT M 290mm Hose	All Inset & Low Pressure Boxes
Transition Fitting	UUPRIMO10	25mm x 3/4" Adapter GF	All Meterbox Installations
Spare Meter	UUU6METERTC	U6 G4 Metrix 152mm Meter Temperature Compensated	All Clesse Merterboxes
Ball Valves	UU6276024-RIV	3/4" BSPT F x 3/4" BSP Conical Meter Inlet Valve	All Metered Installations
Ball Valves	UU6276020	3/4" BSPT MxF Butterfly Ball Valve	Medium Pressure Boxes
General Fittings	UU75481	3/4" x 22mm Elbow Compression Joint	All 22mm Outlet Boxes
General Fittings	UUMBUMBRKT	Evobox Meter Shelf/Bracket	All Clesse Meterboxes
General Fittings	UUIS0037	Spare Spigot for Mitras Inset/Recessed Box	Inset Only
General Fittings	UUELBMFG3/4	3/4" MxF Galv Elbow	Medium Pressure Boxes
General Fittings	UUMETBC320	Standard BS746 Meter Union 1" x 3/4"	All Clesse Meterboxes
General Fittings	UUMETBC222	Standard BS746 Meter Union 1" x 22mm	Inset Only
General Fittings	UUMF90PT1208	3/4" BSP M x 1/2" Female Elbow	All Bulkhead Outlet Boxes
General Fittings	UUMETBW300	Spare Meter Washer 1" BS746	All Meter Unions or Hoses



CLESSE PART NO:
052321AA

**3RD STAGE UPSO
METERBOX REGULATOR**
37mb 7.2kg/h 100kW

**SUPPLIED BY
CLESSE
(UK) LIMITED**



052321AA

Technical Information	
Regulator	STB27
Capacity kg/h (kW)	7.2 (100)
Set Pressure	37 mbar
Inlet Pressure	75 mbar (50-400)
Limited relief Valve	N/A
OPSO Set Pressure	N/A
UPSO Pressure	27-30 mbar
Design Standard	EN13785
Inlet connection	3/4"
Outlet connection	3/4"

Application

These service governors regulate the gas pressure from a 400 mbar maximum supply pressure to the appliance service pressure.

Working temperature: -20 / +60°C (-4 / +140°F).

UPSO Operation Principle

An Under Pressure Shut Off (UPSO) safety device stops the gas flow in event the regulated pressure is lower than a defined value. Such under-pressures occur mainly in case of lack of supply pressure. In certain defined installations it can occur in case of excess of flow.

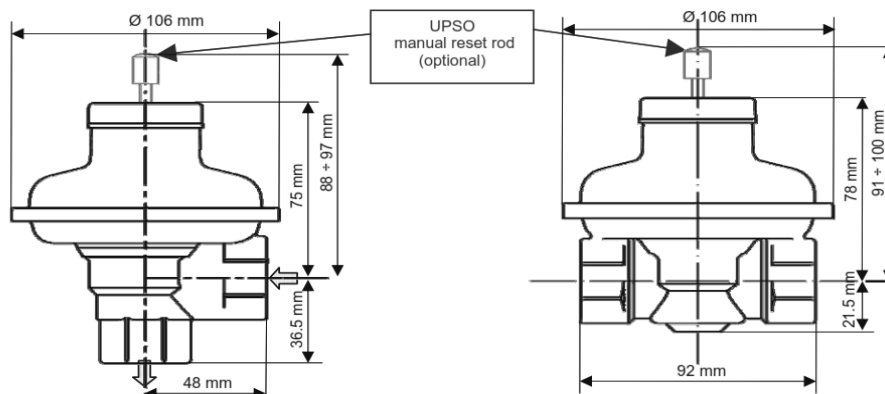
Resetting the UPSO

1. Check that all downstream valves are turned off.
2. Pull the knob (K) for few seconds (time to restore the nominal pressure in the downstream pipework).
3. Release the knob (K).

***Warning: do not turn or twist the knob (K)**

Maintenance

The operation of the regulator and the gas installation shall be checked periodically. In ideal use conditions and in order to guarantee the correct operation of the installation, the regulator should be replaced within 10 years of use. In severe operating conditions, it should be inspected frequently and replaced when necessary.

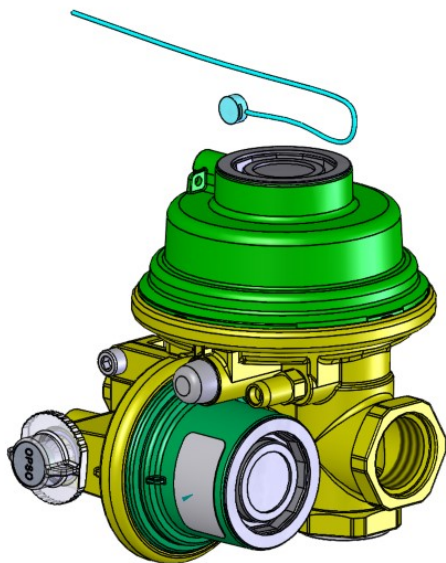




CLESSE PART No.
006829FE
SAP No. TBC

BP2284 2ND STAGE UPSO
OPSO METERBOX REGULATOR
37mb 9kg/h 125kW

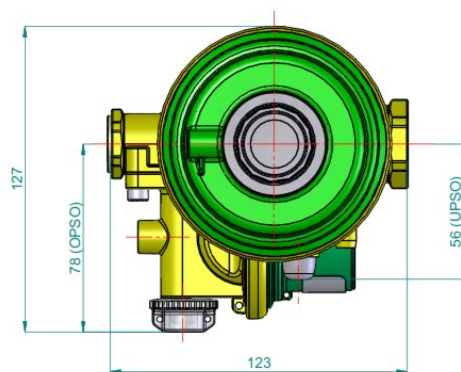
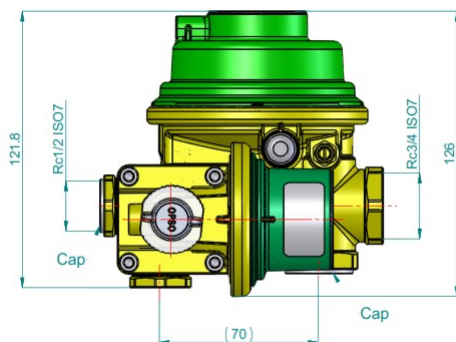
SUPPLIED BY
CLESSE
(UK) LIMITED



Assembly Instruction

1. Check the contents of the box, ensuring that the regulator meets the pressure and capacity of the installation and all items are present and not damaged.
2. This regulator requires 1st Stage pressure reduction when using LPG down to 4 bar or below. Due to liquefaction at low ambient temperatures, Clesse recommends the use of inlet pressure of 2 bar or below, therefore, the regulator has been marked to show this.
3. Perform a gas tightness test to the requirements of UKLPG COP22 or BS 5482:1 – 2005 to suit the installation. There is a test point on the regulator, only use a small 3.5mm flat bladed screw driver and avoid over tightening when finished.
4. Fully commission assembly, checking operating pressures only when the appliances are available and connected. Otherwise, check for soundness and lockup before leaving.
5. Use Leak Detection Fluid on the test point, checking for any leakage and wiping off any remaining residues. If not using LPG for test media, purge the assembly fully before leaving site.
6. Adjustment of UPSO and Limited Relief Valve is not possible. OPSO setting is pre-set and should not require adjustment.
7. Fit the OPSO seal, passing the wire through the regulator hole in the body and clear plastic OPSO cap.

The regulator is pre-set at the factory and does not normally need adjustment. If operating pressure adjustment is required, see overleaf.



Technical Information	
Regulator	BP2203 GIRO® VENT
Capacity kg/h (kW)	9 (125)
Set Pressure	37 mbar
Inlet Pressure(2nd Stage)	0.3-2 bar
Limited relief Valve	75 mbar
OPSO Set Pressure	100 mbar
UPSO Pressure	>25 mbar
Design Standard	EN16129
Inlet connection	Rc1/2F ISO/7 (BSP)
Outlet connection	Rc3/4F ISO/7 (BSP)



This regulator is used in all medium pressure meter box assemblies supplied by Clesse UK.

Operating Conditions	Settings
Lock-up Pressure	50mb or less
Operating pressure	37mb +/- 5mb
Operating temperature	-20°C to 45°C
Max Operating Inlet Pressure	4bar



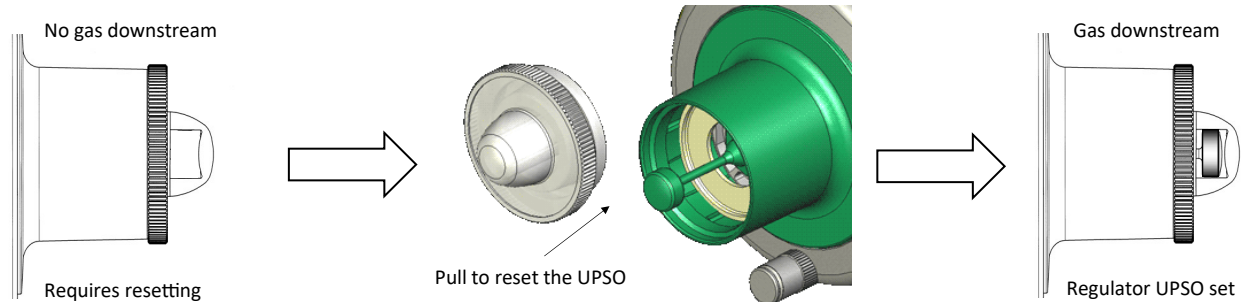
CLESSE PART No.
006829FE
SAP No. TBC

BP2284 2ND STAGE UPSO
OPSO METERBOX REGULATOR
37mb 9kg/h 125kW

SUPPLIED BY
CLESSE
(UK) LIMITED

ANY REGULATOR ADJUSTMENTS AND RESET PROCEDURES SHOULD BE CARRIED OUT BY A SUITABLY QUALIFIED GAS ENGINEER

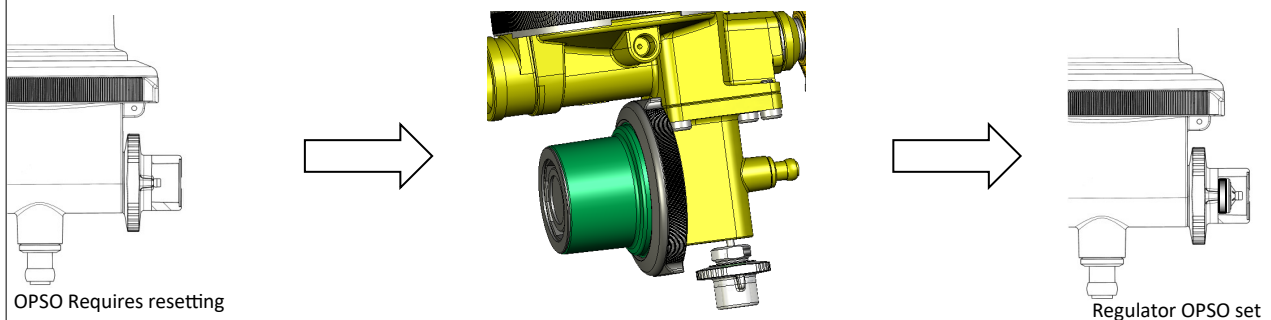
Under Pressure Shut Off Valve Reset on a 2nd Stage Regulator



Before resetting the Under Pressure Shut Off

1. Ensure any valves downstream of the regulator are closed before introducing gas into the pipework.
2. Check gas is available, turned on upstream of the regulator, and that the OPSO is also set.
3. Unscrew the large clear plastic cap on the main body of the regulator as shown.
4. Under this cap is the green UPSO reset spindle; gently pull the green re-set and hold in this position whilst downstream pipework fills with gas.
Do not push the reset spindle
5. Replace the cap, finger-tighten, and commission the installation if required.
6. When reset, the green spindle is clearly visible under the clear cap as shown, with the best viewing angle from the side.

Over Pressure Shut Off Valve Reset on a 2nd Stage Regulator



1. Over Pressure Shut Off must be reset by a qualified gas engineer, who should establish any cause for tripping, particularly if this device trips repeatedly.
2. The device is fitted with a sealing wire, this must be replaced when reset.
3. If the OPSO has tripped together with UPSO, then the OPSO must be reset first.
4. The gas supply is not required to be turned on, but ensure downstream valves have been turned off before resetting.
5. Remove sealing wire and unscrew the OPSO reset cap, in doing so this will begin to engage the reset spindle.
6. The OPSO cap is attached to the green reset indicator inside and is used to pull the device to reset, pull the cap firmly.
7. When reset, replace cap, reseal with new wire seal, and if required, proceed to reset UPSO.

Nominal Pressure Adjustment



Regulator adjustment is not normally required. In the event that this is needed:

1. Remove the cap, remove and discard the white plastic tamperproof disc, and adjust to give the desired pressure.
2. Replace the cap.

Adjust the disc to alter outlet pressure